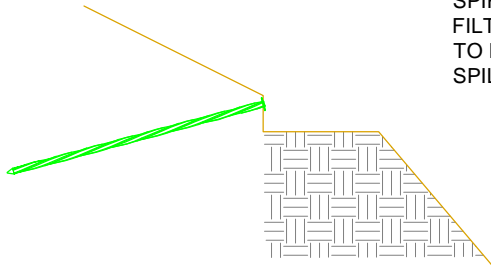
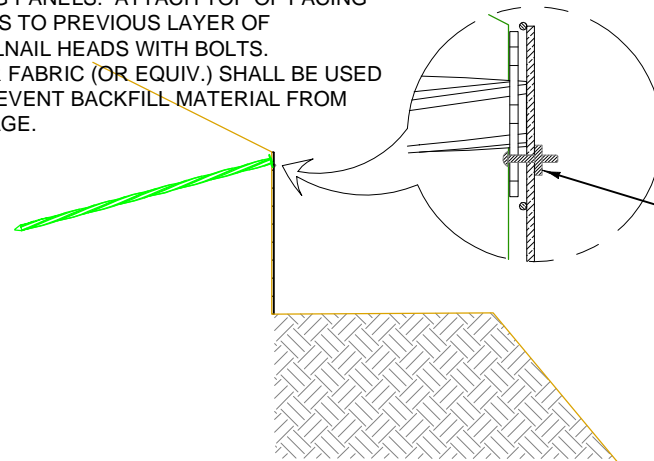


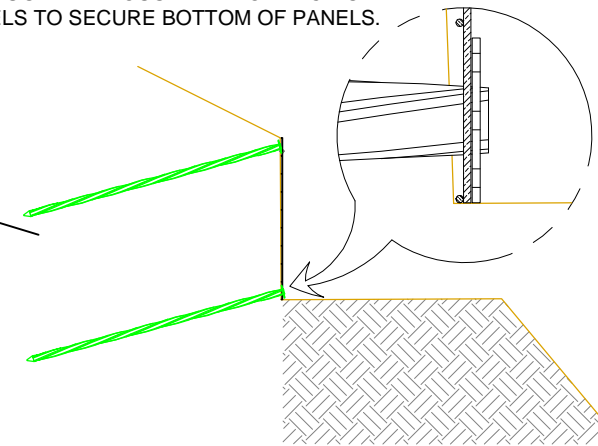
STEP 1
EXCAVATE TOP OF WALL AND DRIVE FIRST LAYER OF SPIRALNAILS



STEP 2
EXCAVATE DOWN 5' AND PLACE LAYER OF FACING PANELS. ATTACH TOP OF FACING PANELS TO PREVIOUS LAYER OF SPIRALNAIL HEADS WITH BOLTS. FILTER FABRIC (OR EQUIV.) SHALL BE USED TO PREVENT BACKFILL MATERIAL FROM SPILLAGE.

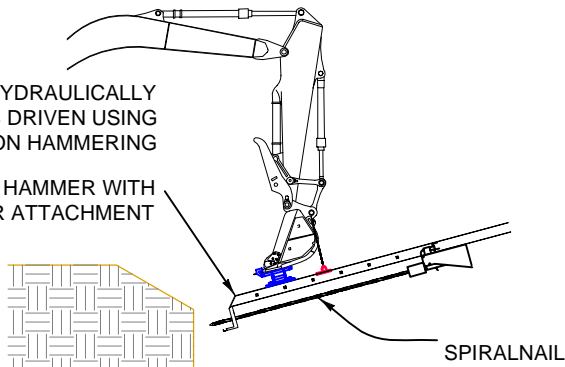


STEP 3
DRIVE NEXT LAYER OF SPIRALNAILS THROUGH PREVIOUS LAYER OF FACING PANELS TO SECURE BOTTOM OF PANELS.



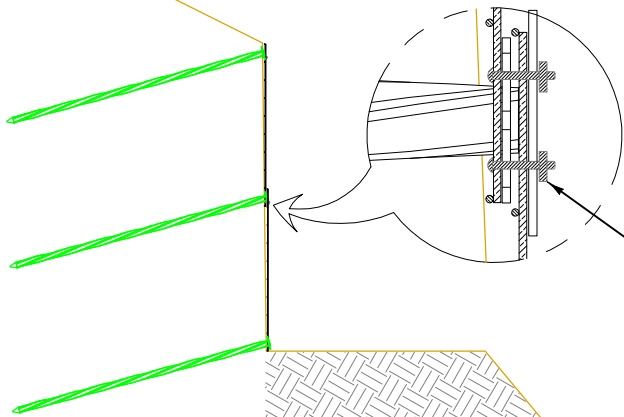
HAMMER IS ACTIVATED HYDRAULICALLY AND THE SPIRALNAIL IS DRIVEN USING VIBRO - PRECUSSION HAMMERING

HAMMER WITH EXCAVATOR ATTACHMENT



TYPICAL NAIL DRIVER SETUP

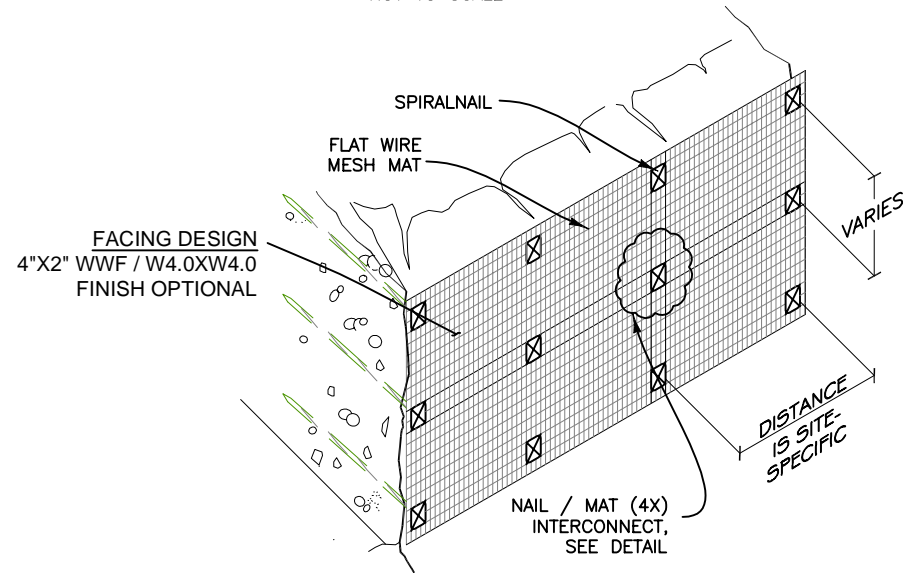
STEP 4
EXCAVATE DOWN AN ADDITIONAL 5' AND PLACE ANOTHER LAYER OF FACING PANELS. REPEAT STEPS 3 THROUGH 4 TO BOTTOM OF WALL SECURING FINAL LAYER OF FACING PANELS WITH THE BOTTOM LAYER OF SPIRALNAILS.



BOLT BEARING PLATE TO SPIRALNAIL

CONSTRUCTION SEQUENCE

NOT TO SCALE



PICTORIAL ELEVATION